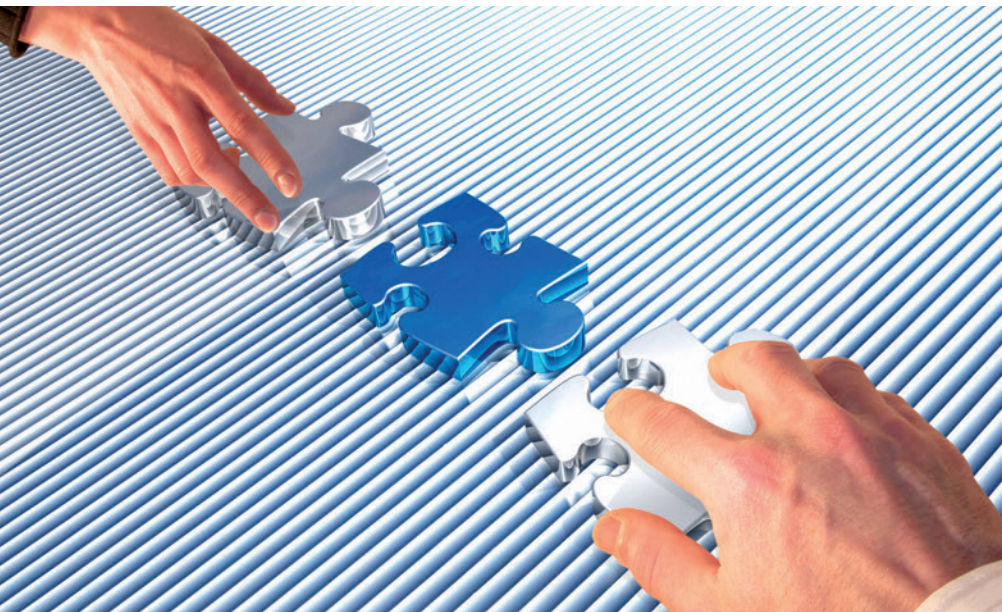


vitero Connectors to Learning Management Systems (LMS)

Seamlessly Linking Contents and Live e-Learning

A **Learning Platform** or **Learning Management System (LMS)** is a software system designed for the distribution of learning contents and the organization of learning processes. In addition to that it serves teachers and students as a means for asynchronous communication, e. g., in a forum. Companies, schools, public authorities and universities use LMS in order to improve their teaching efficiency, to organize the flow of information, and to facilitate learning as well as administrative processes. A LMS is a so-called ‘asynchronous’ tool, i. e. users, tutors and administrators access the relevant learning contents independently of one another. They communicate in written form via forums and chat rooms. Consequently, if live lessons are offered as well, a software system is needed that allows for live meetings that include oral communication, interaction and group work.



A Top Team: LMS and Virtual Classroom (VC)

Educationists and pedagogues agree that the key to a long-lasting and application-oriented increase of knowledge and competences lies in the frequent variation of teaching methods, lively interaction and learning on ‘different channels’. As a result it seems natural and preferable to combine LMS

and live e-learning systems. Without the proper connector, an undesirable shift from LMS to live system, i. e. the ‘virtual classroom’ (VC), becomes necessary. This means that participants are required to log in again with differing login data, the learning flow is interrupted. On top of that, users have to set up two user accounts – another potential source for misunderstandings, and it also means time-consuming

administrative work. When using an asynchronous and a synchronous tool simultaneously – without a proper connector – the monolithic learning atmosphere dissolves. The administrative work for user accounts, groups, and appointments is doubled and a shift from one system to the other occurs.



vitero Connector – the Perfect Symbiosis of LMS and VC

A connector (i. e. an interface between these two systems) allows for the seamless use of LMS and virtual classroom, making them easier to administrate and more comfortable to use: switching between systems works seamlessly, users just log in once (‘single sign-on’) and users and contents can be administered by a single system. **vitero** offers connectors for several learning platforms.

vitero connectors provide, for instance, the following features:

- **User administration:** participants, groups, and appointments can be transferred automatically from the LMS into **vitero**.
- **Setting up vitero appointments within the LMS:** appointments can be created directly within the LMS.
- **Single Sign-On:** thanks to single sign-on a single click is enough to switch from the LMS to **vitero**. Participants do not need to login anew.
- **Content Management:** via the LMS, session-related contents can be made available and distributed in the virtual team room.
- **Periods of presence:** The statistical recording (e. g. periods of presence of the participants) can be called up via the respective LMS.



vitero LMS Connectors: Overview

| Feature \ LMS | User administration | Creating vitero appointments | Single Sign-On | Content Management System | Periods of presence | vitero Partner |
|------------------------------|---------------------|------------------------------|----------------|---------------------------|---------------------|---|
| Avendoo | ✓ | ✓ | ✓ | - | - | Magh & Boppert GmbH Contact Website |
| Classroom Manager Enterprise | ✓ | ✓ | ✓ | ✓ | ✓ | IM S Intelligent Media Systems AG Contact Website |
| ecadiaPro | ✓ | ✓ | ✓ | ✓ | ✓ | STL GmbH Contact Website |
| eFront | ✓ | ✓ | ✓ | ✓ | ✓ | CLICK&LEARN GmbH Contact Website |
| IBT Server | ✓ | ✓ | ✓ | - | - | time4you GmbH Contact Website |
| ILIAS ¹ | ✓ | ✓ | ✓ | ✓ | ✓ | Vimotion GmbH Download Website |
| IMC Learning Suite | ✓ | ✓ | ✓ | ✓ | ✓ | imc AG Contact Website |
| SAP Litmos | ✓ | ✓ | ✓ | - | - | MuniConS GmbH Contact Website |
| Moodle ¹ | ✓ | ✓ | ✓ | ✓ | - | Synergy Learning Download Website |
| NetDimensions LMS | ✓ | ✓ | ✓ | - | - | PeopleFluent Contact Website |
| OpenOLAT ¹ | ✓ | ✓ | ✓ | ✓ | - | frentix GmbH Download Website |
| Totara ¹ | ✓ | ✓ | ✓ | ✓ | - | Synergy Learning Download Website |
| SAP Learning Solution | ✓ | ✓ | ✓ | ✓ | - | tts GmbH Contact Website |
| VIVERSA | ✓ | - | ✓ | - | ✓ | VIWIS GmbH Contact Website |
| Zinal NEW | ✓ | ✓ | ✓ | ✓ | ✓ | Zinal Consulting GmbH Contact Website |

For further information and downloads please visit: www.vitero.de/connectors



Contact

You would like to benefit from the advantages **vitero** has to offer but your LMS is not listed below or you use an in-house development? No problem! Thanks to our web service interface **vitero** can connect any LMS imaginable. Feel free to contact us!

Online: www.vitero.eu
 E-Mail: info@vitero.eu
 Telefon: +49 (0)711 / 686 89 88-0
 Fax: +49 (0)711 / 686 89 88-80

vitero GmbH
 Nobelstraße 15
 70569 Stuttgart
 Germany

¹ Available as free download.